

**Head Office:**  
Dixon Kelley Estate Agents  
1 Penn Court  
Station Road, West Moors  
Dorset. BH22 0JJ

# DORSET PARK HOMES

**DRAFT**

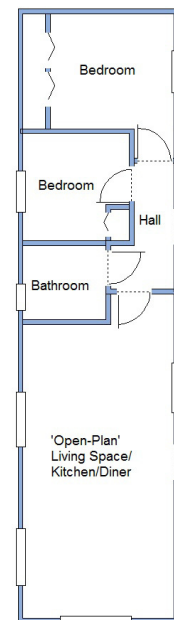
[www.dorsetparkhomes.com](http://www.dorsetparkhomes.com)

**Telephone: 01202 877511**

**26 Church Farm Close Park, Dibden, Southampton, Hants. SO45 5TF**



**NEW HOME—Ready for Early Occupation!**



This drawing has been prepared for diagrammatic purpose only. Not to scale

## 2-Bedroom Park Home approx 45' x 12'

Accommodation & approximate room dimensions:

- Omar 'Regency'
- Entrance Hall: Cloaks cupboard.
- 'Open Plan Living Space' including superb kitchen/diner: Approx 23'6" max x 10'9"
- Kitchen/Diner: Range of floor and wall cupboards. Built-in oven and hob with extractor fan over (untested). Integrated Dishwasher, Fridge/Freezer & Washing Machine (untested).
- Lounge Area: Feature fireplace & box bay window.
- Bedroom 1: approx 9'3" x 8'4" Plus built-in furniture.
- Bedroom 2: approx 7'9" x 7'9". Built-in furniture.
- Bathroom: Panelled bath with thermostatic shower over. Wash basin & WC. Chrome towel rail.
- PVCu Double-Glazing.
- Gas Central Heating (system untested)
- Garden with Brick Shed.
- Parking
- Age Restriction 50+
- No Pets Allowed

## FULLY FURNISHED



**Additional photographs at [www.dorsetparkhomes.com](http://www.dorsetparkhomes.com)**

**Price £165,000**

**Pitch Fee approx £212 per calendar month**

**VIEWING STRICTLY BY APPOINTMENT WITH THE VENDOR'S AGENT Dorset Park Homes 01202 877511**

**IMPORTANT NOTE:** These particulars are believed to be correct but their accuracy is not guaranteed. They do not form part of any contract. Nothing in these particulars shall be deemed to be a statement that the property is in good structural condition or otherwise, nor that any of the services, appliances, equipment or facilities are in good working order or have been tested. Purchasers should satisfy themselves on such matters prior to purchase Ref.W03866

*The recommended specialist in Park Home sales*

Proprietor: Simon Dixon



**Zoopa.co.uk**

